

HAPPY HOME SALE AT \$1½ MILLION

A check of sales totaling almost \$1,500,000 at Happy Homes in the last four weeks revealed that veterans comprise about one-third of the buyers in the newly opened 10th unit, General Sales Manager Sam Birkus said today.

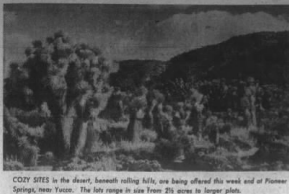
Explaining that veterans and servicemen may buy these three-bedroom dwellings on identical terms, Birkus added: "The Happy Home organization has been building houses for families with modest means for almost 35 years, with sales to nonveterans outnumbering those to G.I.s about four to one since the opening of the current fast-selling unit. The pronounced change in ratio proves that we are meeting in a practical way the home-buying problem which confronts vets in today's tight-money market."

Monthly payment at Happy Homes is only \$189 with monthly payments of \$100, principal and interest and full price of \$9495, Birkus said. Happy Homes furnished models are reached via San Bernardino Freeway to Park Road north (right), go to Valley Blvd., right on Valley to



BEAMED CEILINGS and plus wall-to-wall carpeting lead into of luxury in Happy Home living rooms, above.

New Medical Center is now under way, John Construction on a \$600,000, 12-unit, six-story medical building at 1001 Gay-Dwyer-Curtis and Co. on Jay Ave. in Westwood Village, announced today.



COZY SITES in the desert, beneath rolling hills, are being offered this week end in Pioneer Springs, near Yuca. The lots range in size from 2½ acres to larger plots.

PIONEER SPRINGS OPEN

Thousands of persons interested in desert government homesteads are expected to attend this week end's preview showing of Pioneer Springs, two-and-a-half-acre and larger desert view sites which will be available from \$105, according to a spokesman for Pioneer Springs Associates, owners-developers.

Available on easy monthly terms, altitude of the sites varies from 4000 to 5000 feet. It was stated, Pioneer Springs is reached via Highway 98 to the Twentynine Palms turn-off, through Morongo toward Yuca where road signs indicate left turn to Pioneer Springs sales office in Pioneer.

For those unable to visit the new desert resort community this week end, full information may be obtained from Pioneer Springs sales office, Box 17K, Pioneersville, Calif., officials said. Sites are all in the heart of what is reportedly one of the most magnificent natural year-with cool, comfortable sun-drenched areas in America and the "mere and mild" winters, the attractive community adjoins a well-known community adjoined on the eastern slope of the San Bernardino Mountains. Located just 20 miles in the high Joshua desert from Palm Springs and San Jacinto.

about 36 miles to Big Bear, Pioneer Springs offers amenities are all in the heart of what is reportedly one of the most magnificent natural year-with cool, comfortable sun-drenched areas in America and the "mere and mild" winters, the attractive community adjoins a well-known community adjoined on the eastern slope of the San Bernardino Mountains. Located just 20 miles in the high Joshua desert from Palm Springs and San Jacinto.

Available on easy monthly terms, altitude of the sites varies from 4000 to 5000 feet. It was stated, Pioneer Springs is reached via Highway 98 to the Twentynine Palms turn-off, through Morongo toward Yuca where road signs indicate left turn to Pioneer Springs sales office in Pioneer.

For those unable to visit the new desert resort community this week end, full information may be obtained from Pioneer Springs sales office, Box 17K, Pioneersville, Calif., officials said.

GOOD NEWS

for **NON-VET** Buyers
New Conventional Terms
NOW \$1000 DOWN

(Full small payments and closing cost.)

Rancho San Jose

Midway between West Covina and Puente in the lovely San Jose Hills District

Veterans • Nothing Down
4½% interest rate

Non-Veterans • Low FHA Terms
5% interest rate

Follow the Don to Quality Street

20 Minutes to Civic Center

Complete Built-in Kitchens Gas or Electricity!

L. E. Dixon Company, Builders Sales Office: Edmond 6-7715

Research Center is Slated for Anaheim
Robertshaw's Union Controls Co. will construct a \$23,000 research center on the Santa Ana Freeway in Anaheim, T. T. Arden, executive vice-president, announced today. The new facility on a five-acre site south of Katella Ave. will have 15,000 square feet.

"Blatler" Restricted
The term "Blatler" is a trademark owned exclusively by the National Association of Home Builders and neither a "vulnerable version" of nor the NAREB red emblem may be used by others.

Welcome to a happier Way of Life!

\$199 MOVES YOU IN

No "pick-ups" — No "hidden shocks"
No added charges of any kind!

NON-VETS and VETS

"happy homes"

UNIT 10 in fast-growing LA PUENTE

3 BEDROOMS with enclosed GARAGE

BEGOST... best-looking... best homes you'll find anywhere in the class in Puente-West Covina area at such a low price! But don't take our word for it—SEE THESE HOMES TODAY! They're yours at a price and on terms you can afford NOW, even on modest incomes... why's that? Because you'll always be proud!

Comparison-proof Value!

- NEW GRADE SCHOOL — scheduled for opening early this Fall—located in the heart of new UNIT 10!
- Big NEW SHOPPING CENTER within a few blocks!

NEW Dream Magic SERIES UNIT 10

Take San Bernardino Freeway to Park Road south (NORTH); go over Beaudin to Valley Blvd. turn east (right) on Valley; and continue past "H" Road to Home's Highway 7 miles to Hamilton Ave. (1 block east of signal at Fair & Corbin) turn south (left).

SEE 6 FURNISHED MODELS Open 7 Days a Week till Bank!

the happiest families live in Ed. Krist "happy homes"

NOW OPEN!

A LIMITED NUMBER OF FABULOUS MOUNTAIN VIEW LOTS

Rim of the World Forest
the HEART of the San Bernardino Mountains,
Lake Arrowhead Vacation Land.

NEW LODGE SITES

720 SQUARE FEET and LARGER!

Stop dreaming of that mountain hideaway that you've made that dream come true to reality. IF YOU want to see these big lodge sites in the land of pine cones and frosty drizzle, of towering peaks and sparkling lakes... and of the PUREST, BRUIEST, CLEANEST air you ever breathe! See how much better you can make the money you've made at the "Rim of the World Forest," we've got 620 lots in the "Rim of the World Forest" that have the best value when you spend time here high above the noise and churning smog.

BUY NOW FOR WEEK ENDS VACATIONS — FOR HEALTH!

\$795

full price!
Down payment from \$79.50!

20% DOWN PAYMENT

BETTER BUYER! THE LOWEST COST BUYING PLAN

To reach Rim of the World Forest: Take the San Bernardino Freeway (you follow and take Left) San Jose at Arroyo Parkway Drive (turn right) to Lake Highway 20, which becomes Fair City Creek Freeway, in Arrowhead Springs. Turn right and take access across Highway 20, then follow the Lake Arrowhead-Fair City Freeway 11 miles to the property. Sales information at office on Highway 20, and in every week end at the Rim of the World Forest.

If you can't come up this week end, mail this coupon TODAY for your FREE BROCHURE #4412

Yes, I would like to know more about Rim of the World Forest.

NAME _____
ADDRESS _____
CITY _____ ZONE _____ STATE _____

MAIL TO: Rowe, Inc., 3460 Wilshire Blvd., Room 412, Los Angeles, Calif.

Credit Rejects

Make possible tremendous savings on a limited number of fine homes!

You'll have to hurry to cash in on this... the first completely air-conditioned homes in the low price field. Built-in range and oven, plus scores of other luxury features, 3 and 4 bedrooms, 2 baths, immediate occupancy. See them today!

San Jose Hills

Full price from \$13,350 to \$13,850

NO DOWN TO VETS

(except few costs & imposts)

The best of the 30-year "G.I." 4½% loans.

Monthly payments from \$79 include everything... taxes, insurance, principal, interest.

KEY-LOAN CO.

Give us the San Bernardino, the answer to the financing problem. Turn right at San Bernardino Freeway, turn right on Glendale Ave. and right on Glendale to Home Road, turn left on Home Road to Key-Loan Co. building.